



Student Feedback Analysis

Academic Session 2022-23

ABOUT FEEDBACK SYSTEM:

The Feedback System is developed to collect students opinion of various parameters influencing the academic and intellectual ambiance of Ranchi University, Ranchi. Questionas based on academic, administrative, infrastructural facilities, evaluation system, curriculum and result publications were asked to assess the teaching learning atmosphere of the University. Likert scaling popular in social science and attitude research projects is used. Common questions, based on Criteria-II & SSS of NAAC parameters, were given to the students for their feedback reflecting the performance of the University. The purpose of Feedback is to Introspect the Academic, Administrative and Students Facilities made available by the University.

QUESTIONS:

Aspect -I Teaching

- Q1 Your overall rating regarding teaching, learning and academic environment: 1= Average, 2= Good, 3= Very Good, 4= Excellent, 5= Outstanding
- Q2 Rate the Relevance of the course in the overall structure of program. 1= Average, 2= Good, 3= Very Good, 4= Excellent, 5= Outstanding
- Q3 Rate the resources provided to the students by the Department. 1= Average, 2= Good, 3= Very Good, 4= Excellent, 5= Outstanding
- Q4 Have you received sufficient material/guidance during the course? Please rate. 1= Average, 2= Good, 3= Very Good, 4= Excellent, 5= Outstanding
- Q5 How do you rate Online Teaching (ICT) used for interaction. 1= Average, 2= Good, 3= Very Good, 4= Excellent, 5= Outstanding
- Q6 How do you rate the evaluation process? 1= Average, 2= Good, 3= Very Good, 4= Excellent, 5= Outstanding
- Q7 How do you rate the library resources in your department? 1= Average, 2= Good, 3= Very Good, 4= Excellent, 5= Outstanding
- Q8 How do you rate the facilities you get regarding undertaking field projects, internships? 1= Average, 2= Good, 3= Very Good, 4= Excellent, 5= Outstanding
- Q9 How do you rate the benefits you get by career counselling and guidance for competitive examinations offered by the University? 1= Average, 2= Good, 3= Very Good, 4= Excellent, 5= Outstanding
- Q10 Your Overall perception for the Curriculum: 1= Average, 2= Good, 3= Very Good, 4= Excellent, 5= Outstanding



RANCHI UNIVERSITY, RANCHI

I.Q.A.C.

A Work by IT Cell of IQAC RU, P.G. Chemistry Campus, mail: itcell@ranchiuniversity.ac.in

METHOD OF FEEDBACK COLLECTION:

All Feedback were collected electronically using Google Form. The link of Google form for Feedback on ten criterions were sent to students via e-mail or What's app group of their department. One e-mail can be used once for sending the feedback in a quarter.

ABBREVIATIONS:

X-axis Criteria-II Plots
Y-axis % Feedback; Calculated on the basis of Score awarded vs Maximum Score

I Teaching & academic ambience
II Relevance of the course
III Resources provided to the students
IV Content material/ guidance
V Online Teaching (ICT)
VI Evaluation process
VII Mid Semester Examination
VIII Facilities regarding field projects/ internships
IX Career counselling and guidance for competitive examinations
X Overall perception for the Curriculum

Q1	Quarter 1	June - August
Q2	Quarter 2	September - November
Q3	Quarter 3	December - February
Q4	Quarter 4	March - May

RESULT ANALYSIS & OUTCOME:

Responses received from students via google form feeded in already prepared Excell Sheet which producess graphical report in printable form and simultaneously prepare Power Point Presentation within a couple of seconds.

To compare reflections projected by students, graphs are plotted in terms of percentage of score awarded vs maximum score possible for collected feedback responses.

Every question in Feedback form were assessed in range of numeral values from 1 to 5 reflecting Average to Excellent labels. [1= Average, 2= Good, 3= Very Good, 4= Excellent, 5= Outstanding].

The feedback System used in Ranchi University was prepared by IQA Cell of Ranchi University and costs not a single penny for its operation and record keeping.

The Graphs plotted were minutely analysed considering the minimum benchmark of 70% of the responses. Response level below 70% is considered alarming and the reason behind lower response will be highlited and the remedial steps to overcome the situation will be recommended.

DISCLAIMER:

Identity of students were kept confidential and no further communication in this regard is done either from IQAC RU or the Department concerned.



RANCHI UNIVERSITY, RANCHI

I.Q.A.C.

A Work by IT Cell of IQAC RU, P.G. Chemistry Campus, mail: itcell@ranchiuniversity.ac.in

Graphical responses:

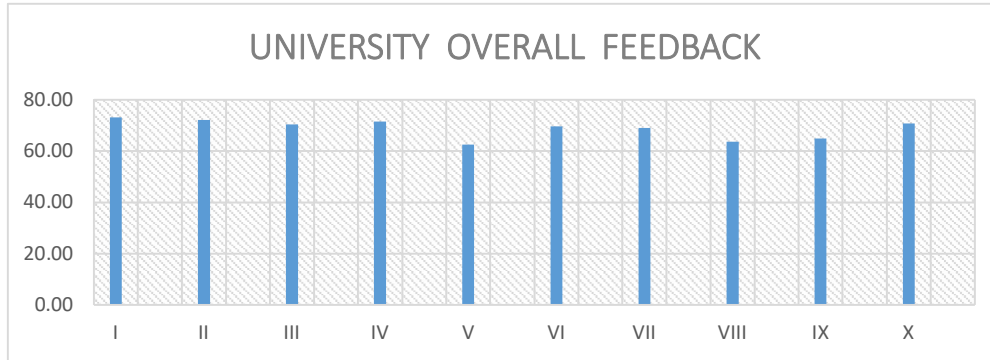
UNIVERSITY OVERALL QUESTION WISE FEEDBACK

Quarter →

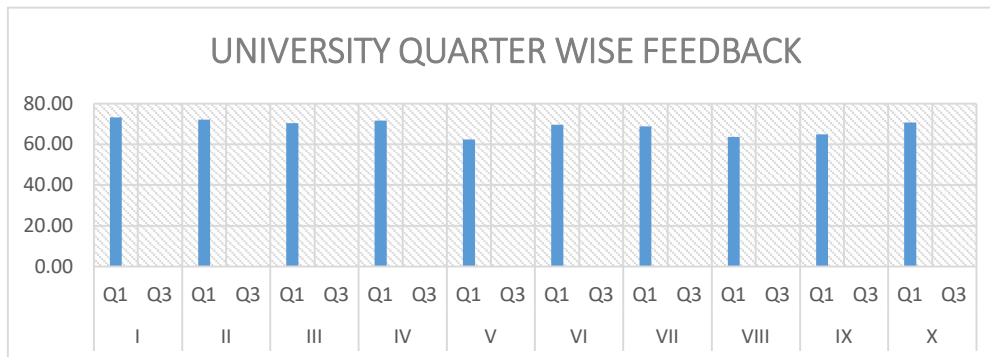
Q1
1184

Q3
0

Total Feedbacks =



UNIVERSITY QUESTION WISE QUARTER WISE FEEDBACK



FACULTY WISE FEEDBACK

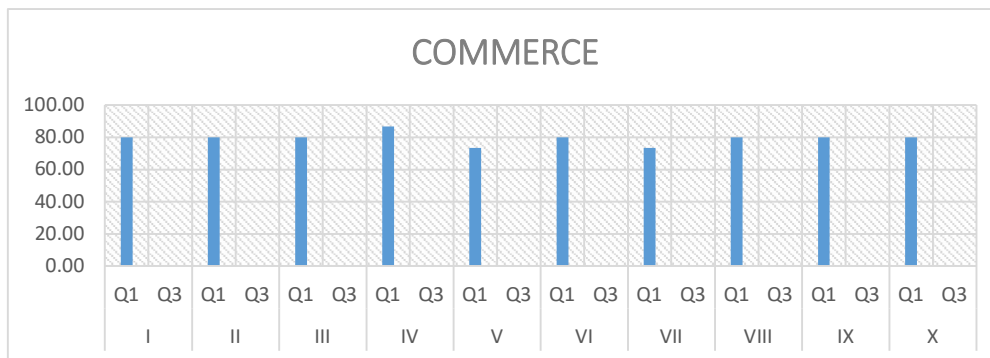
COMMERCE

Quarter →

Q1
3

Q3
0

Total Feedbacks =





RANCHI UNIVERSITY, RANCHI

I.Q.A.C.

A Work by IT Cell of IQAC RU, P.G. Chemistry Campus, mail: itcell@ranchiuniversity.ac.in

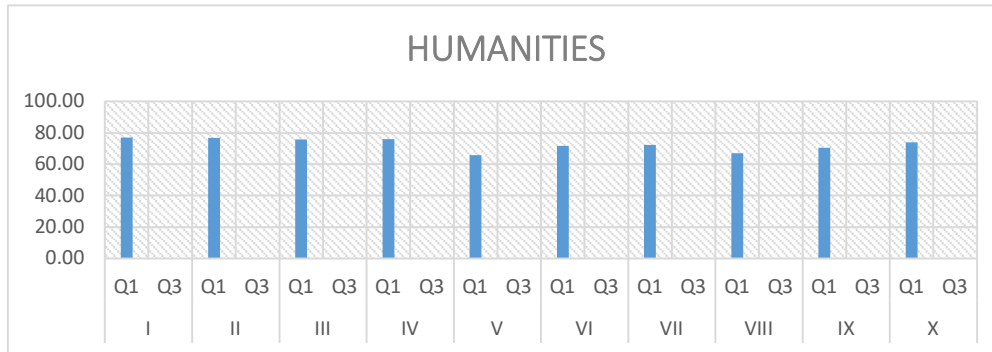
HUMANITIES

Quarter →

Q1
310

Q3
0

Total Feedbacks =



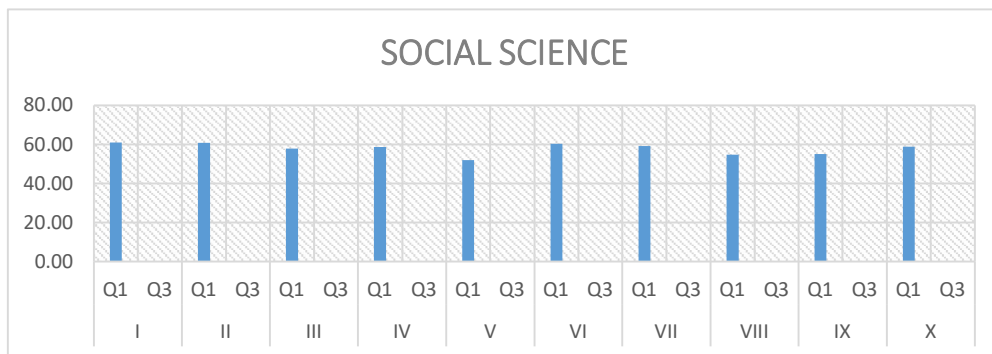
SOCIAL SCIENCE

Quarter →

Q1
243

Q3
0

Total Feedbacks =



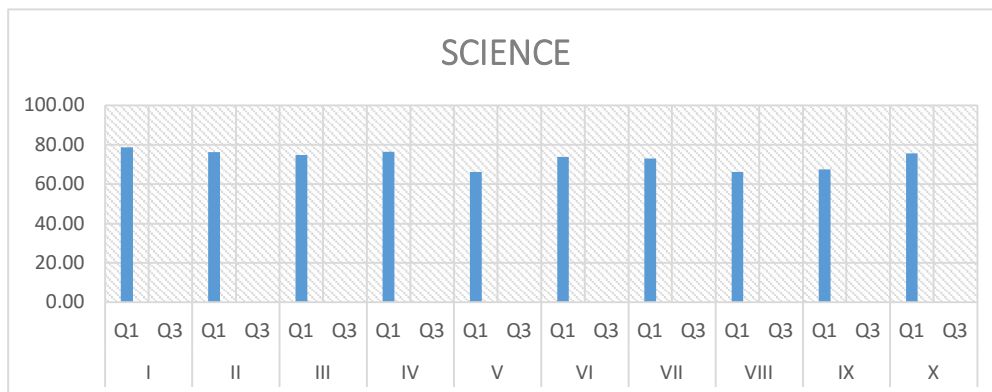
SCIENCE

Quarter →

Q1
457

Q3
0

Total Feedbacks =





RANCHI UNIVERSITY, RANCHI

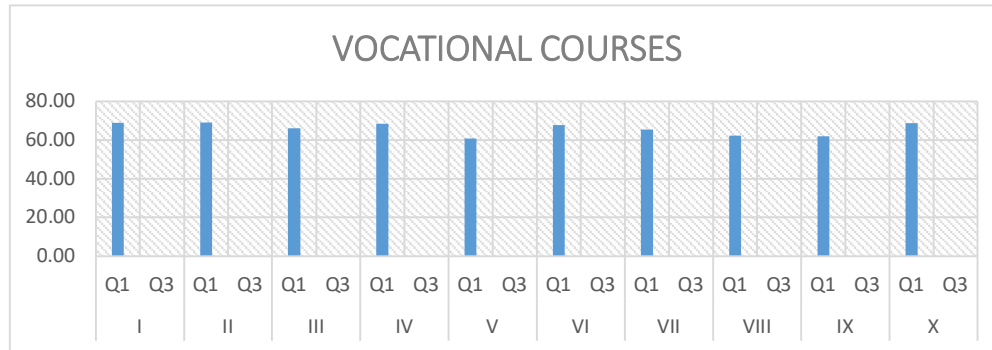
I.Q.A.C.

A Work by IT Cell of IQAC RU, P.G. Chemistry Campus, mail: itcell@ranchiuniversity.ac.in

VOCATIONAL COURSES

Quarter →	Q1
Total Feedbacks =	171

Q3
0



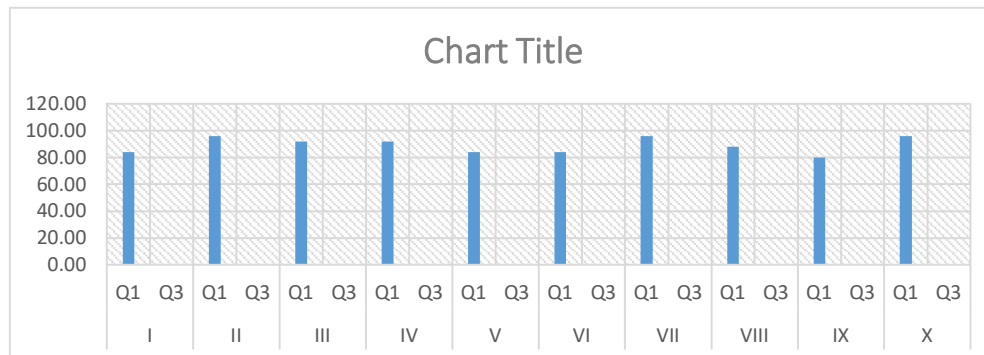
DEPARTMENT WISE FEEDBACK

HUMANITIES

1 Bengali

Quarter →	Q1
Total Feedbacks =	5

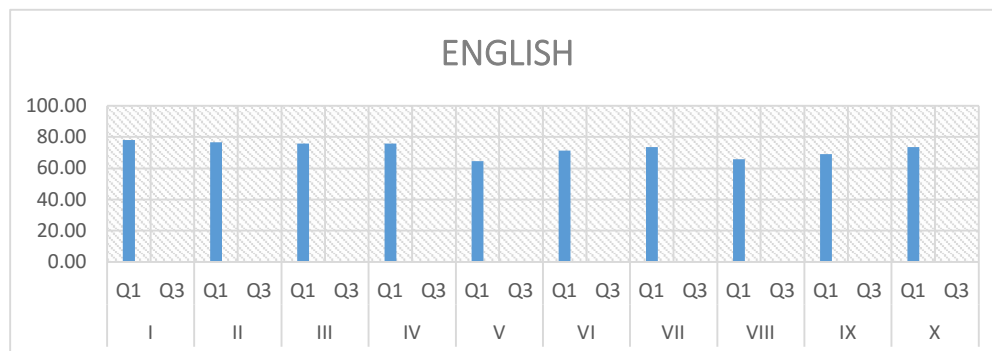
Q3
0



1 English

Quarter →	Q1
Total Feedbacks =	590

Q3
0





RANCHI UNIVERSITY, RANCHI

I.Q.A.C.

A Work by IT Cell of IQAC RU, P.G. Chemistry Campus, mail: itcell@ranchiuniversity.ac.in

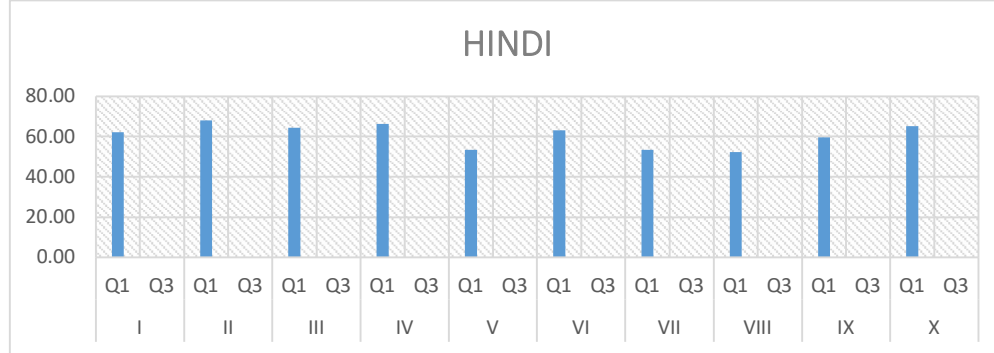
2 Hindi

Quarter →

Q1
45

Q3
0

Total Feedbacks =



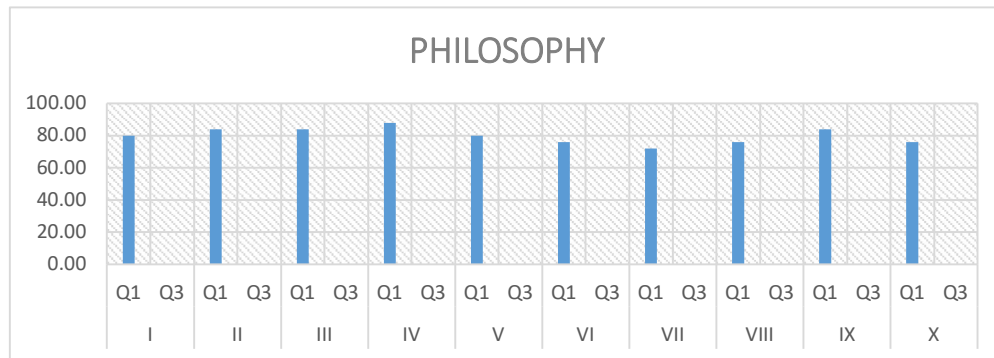
3 Philosophy

Quarter →

Q1
5

Q3
0

Total Feedbacks =



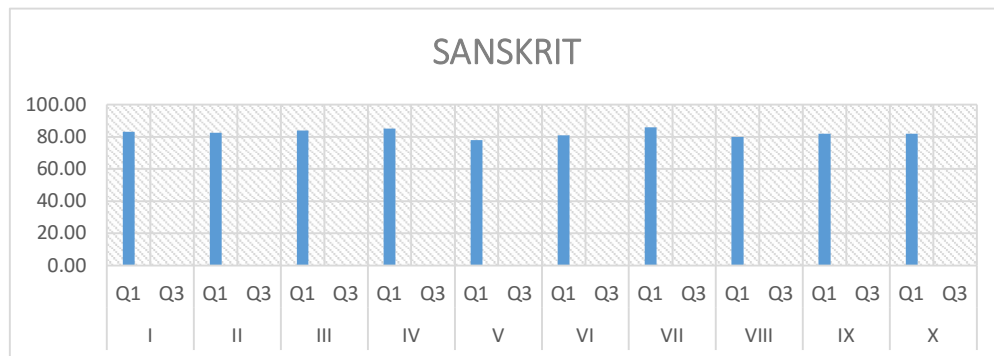
4 Sanskrit

Quarter →

Q1
40

Q3
0

Total Feedbacks =





RANCHI UNIVERSITY, RANCHI

I.Q.A.C.

A Work by IT Cell of IQAC RU, P.G. Chemistry Campus, mail: itcell@ranchiuniversity.ac.in

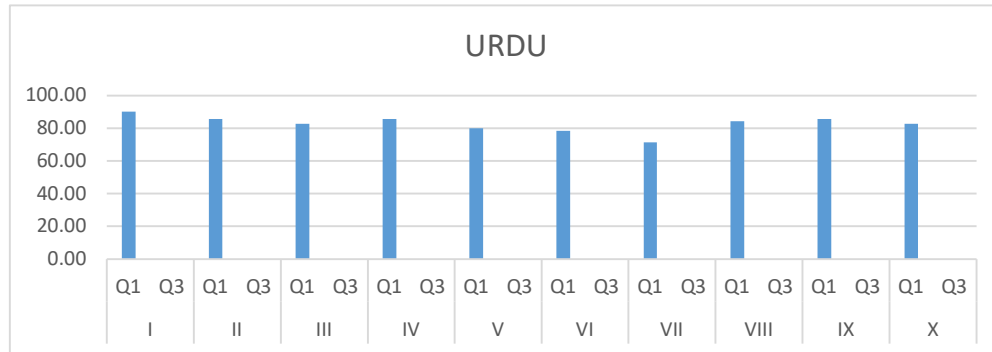
4 Urdu

Quarter →

Q1
14

Q3
0

Total Feedbacks =



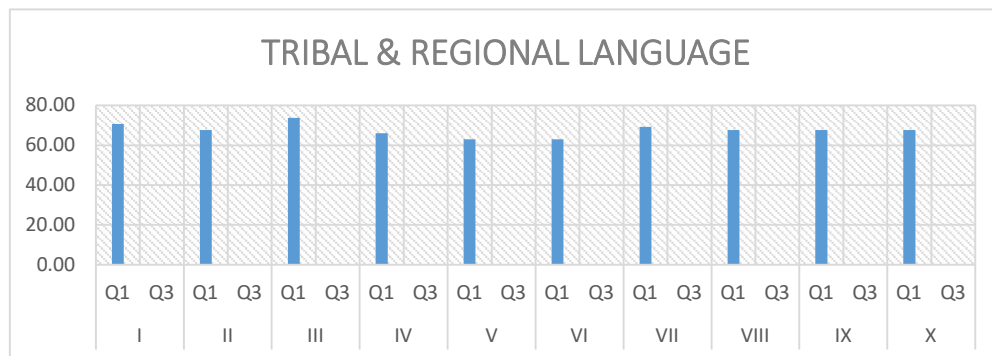
5 Tribal & Regional Language

Quarter →

Q1
13

Q3
0

Total Feedbacks =



SOCIAL SCIENCE

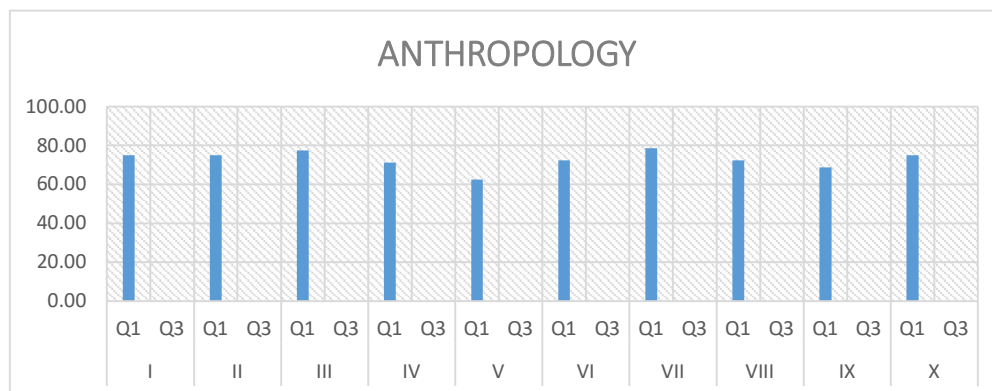
1 Anthropology

Quarter →

Q1
16

Q3
0

Total Feedbacks =





RANCHI UNIVERSITY, RANCHI

I.Q.A.C.

A Work by IT Cell of IQAC RU, P.G. Chemistry Campus, mail: itcell@ranchiuniversity.ac.in

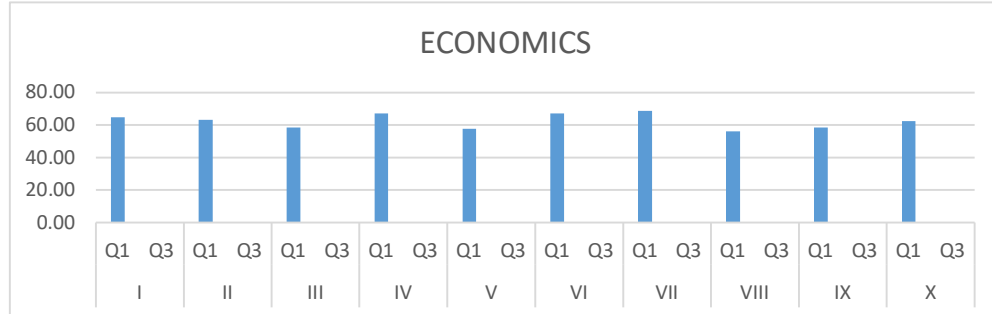
2 Economics

Quarter →

Q1
25

Q3
0

Total Feedbacks =



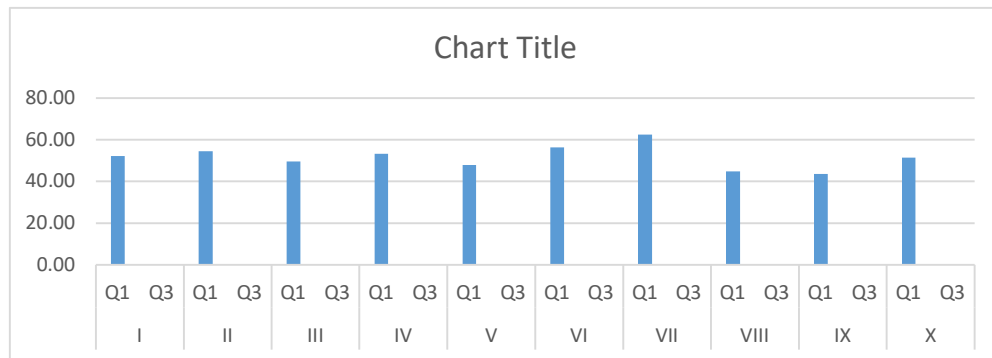
3 Geography

Quarter →

Q1
33

Q3
0

Total Feedbacks =



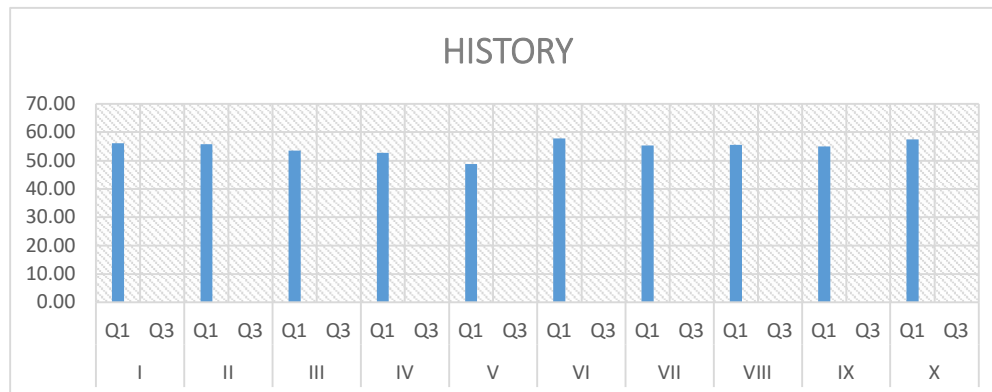
4 History

Quarter →

Q1
72

Q3
0

Total Feedbacks =





RANCHI UNIVERSITY, RANCHI

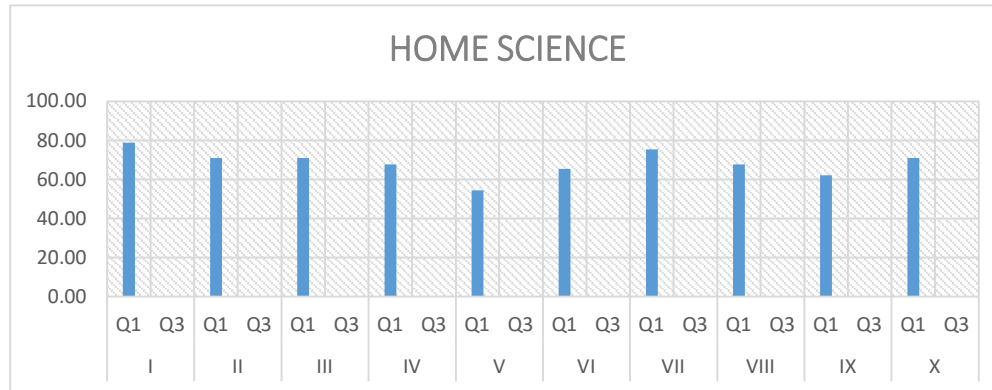
I.Q.A.C.

A Work by IT Cell of IQAC RU, P.G. Chemistry Campus, mail: itcell@ranchiuniversity.ac.in

5 Home Science

Quarter →	Q1
Total Feedbacks =	18

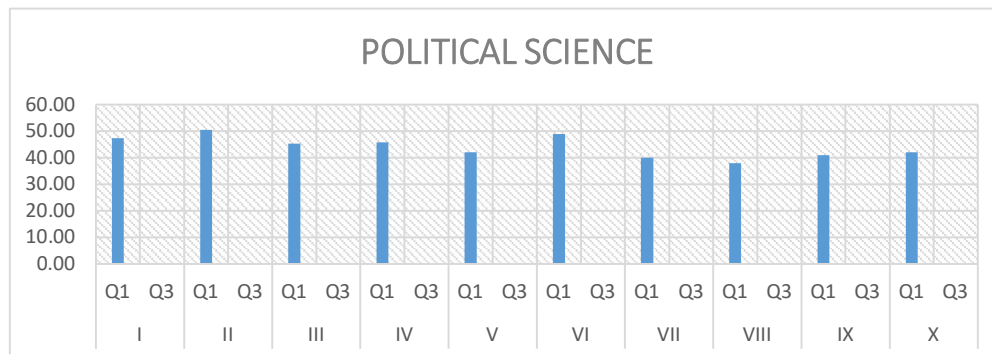
Q3
0



6 Pol Science

Quarter →	Q1
Total Feedbacks =	38

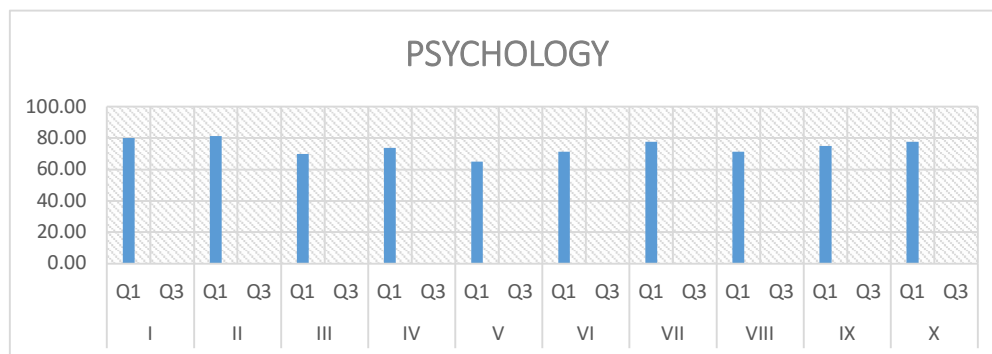
Q3
0



7 Psychology

Quarter →	Q1
Total Feedbacks =	16

Q3
0





RANCHI UNIVERSITY, RANCHI

I.Q.A.C.

A Work by IT Cell of IQAC RU, P.G. Chemistry Campus, mail: itcell@ranchiuniversity.ac.in

8 Sociology

Quarter →

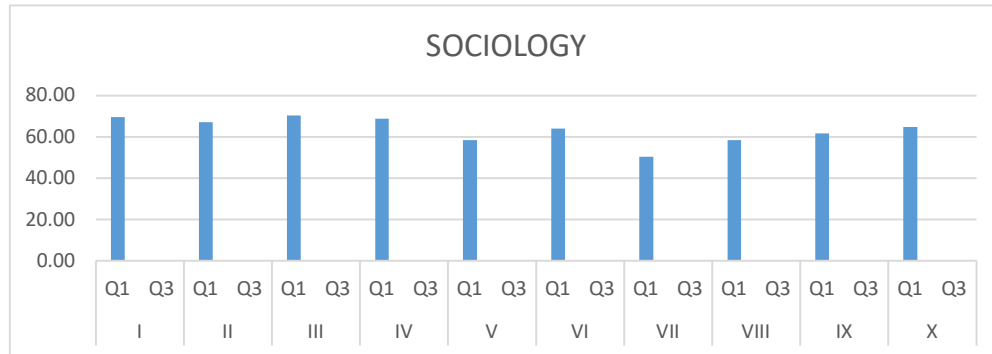
Q1

Q3

Total Feedbacks =

25

0



SCIENCE

1 Botany

Quarter →

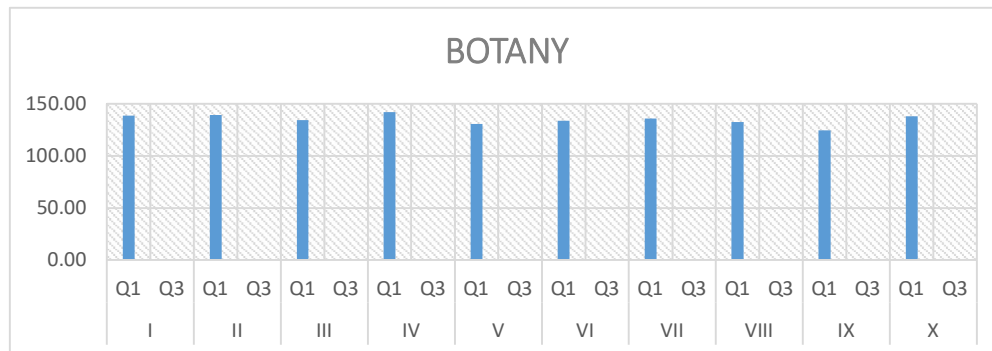
Q1

Q3

Total Feedbacks =

39

0



2 Chemistry

Quarter →

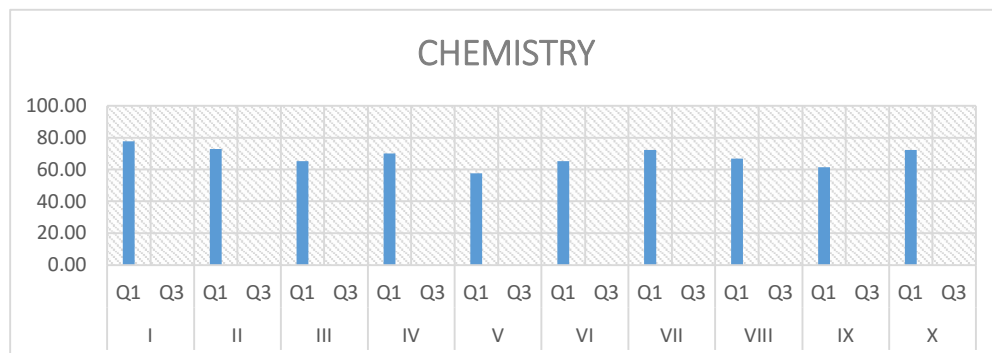
Q1

Q3

Total Feedbacks =

26

0





RANCHI UNIVERSITY, RANCHI

I.Q.A.C.

A Work by IT Cell of IQAC RU, P.G. Chemistry Campus, mail: itcell@ranchiuniversity.ac.in

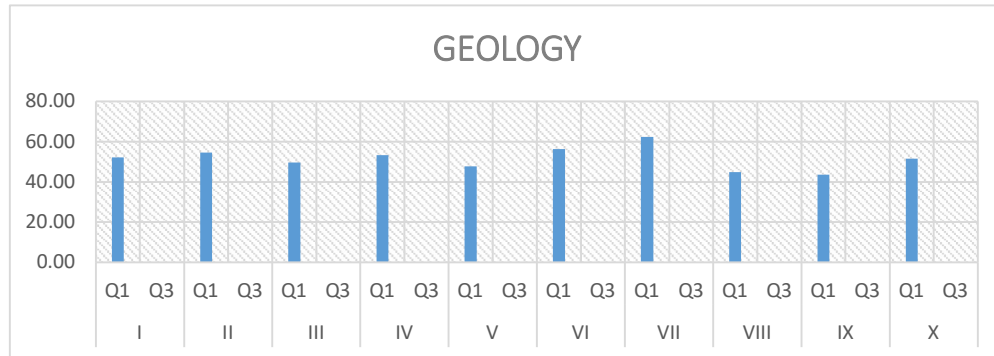
3 Geology

Quarter →

Q1
33

Q3
0

Total Feedbacks =



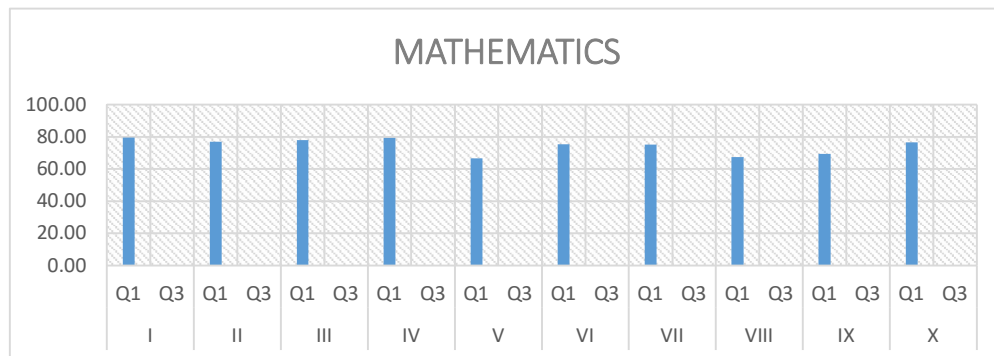
4 Mathematics

Quarter →

Q1
149

Q3
0

Total Feedbacks =



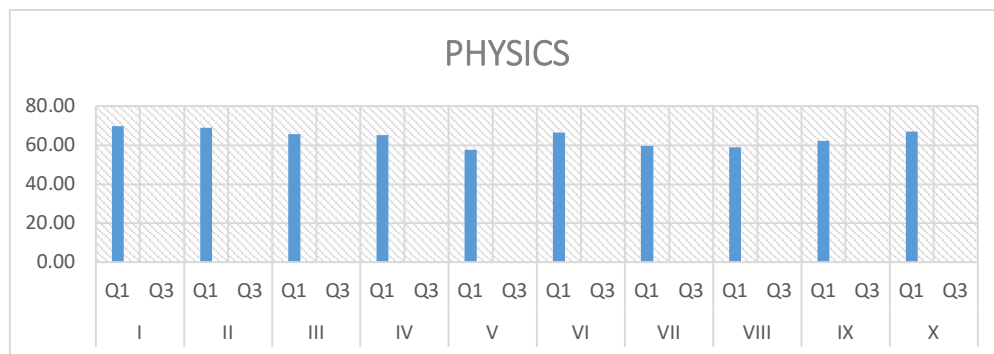
5 Physics

Quarter →

Q1
141

Q3
0

Total Feedbacks =





RANCHI UNIVERSITY, RANCHI

I.Q.A.C.

A Work by IT Cell of IQAC RU, P.G. Chemistry Campus, mail: itcell@ranchiuniversity.ac.in

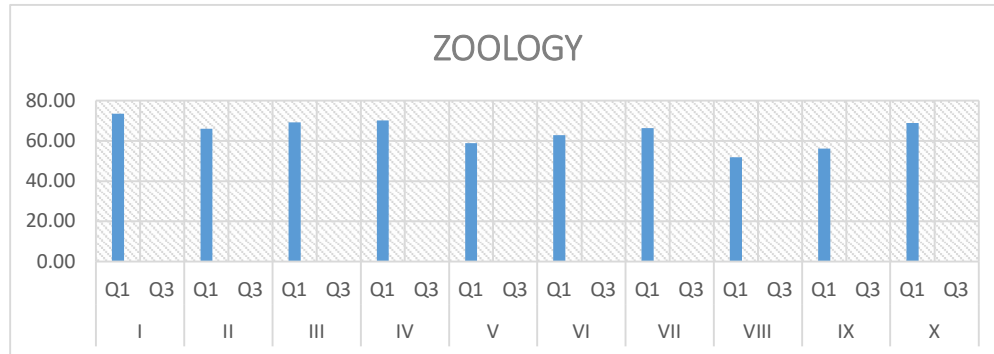
6 Zoology

Quarter →

Q1
69

Q3
0

Total Feedbacks =



VOCATIONAL DEGREE COURSES

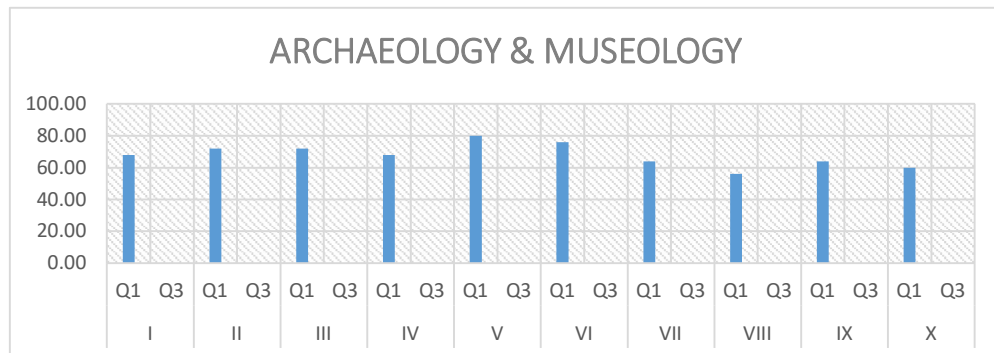
1 Archaeology & Museology

Quarter →

Q1
5

Q3
0

Total Feedbacks =



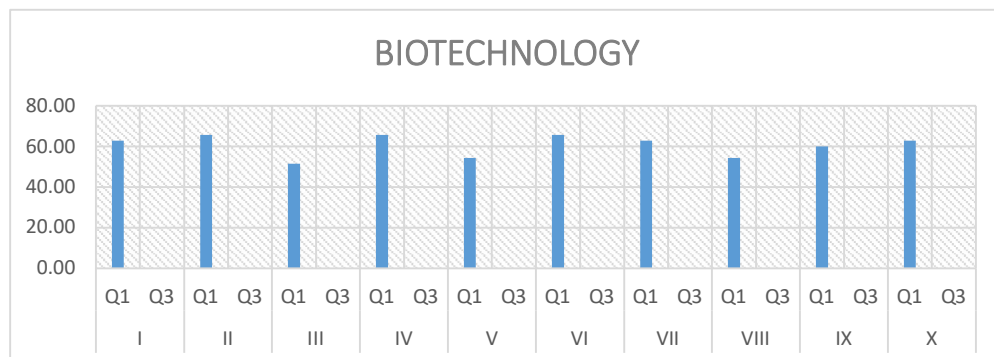
2 Biotechnology

Quarter →

Q1
6

Q3
0

Total Feedbacks =





RANCHI UNIVERSITY, RANCHI

I.Q.A.C.

A Work by IT Cell of IQAC RU, P.G. Chemistry Campus, mail: itcell@ranchiuniversity.ac.in

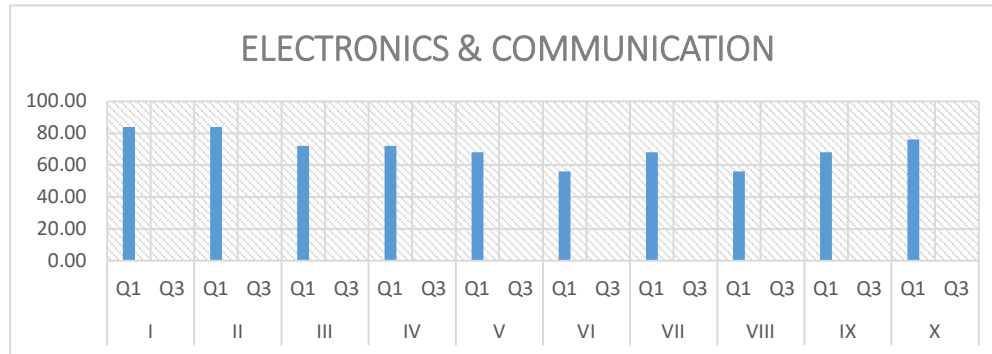
3 Electronics & Communication

Quarter →

Q1
5

Q3
0

Total Feedbacks =



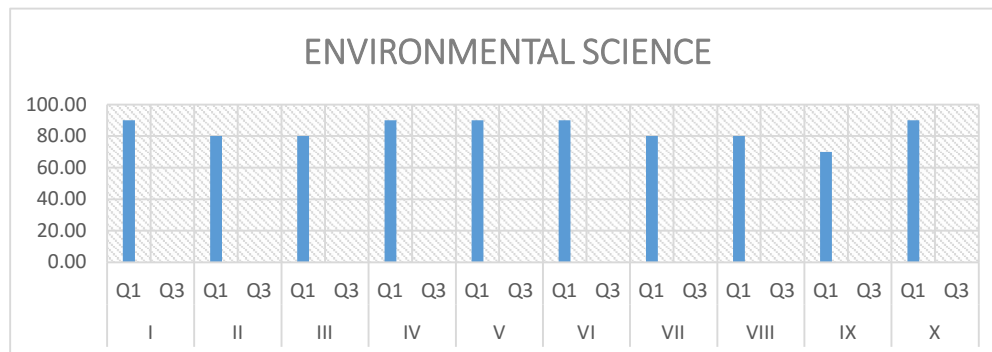
4 Environmental Science

Quarter →

Q1
2

Q3
0

Total Feedbacks =



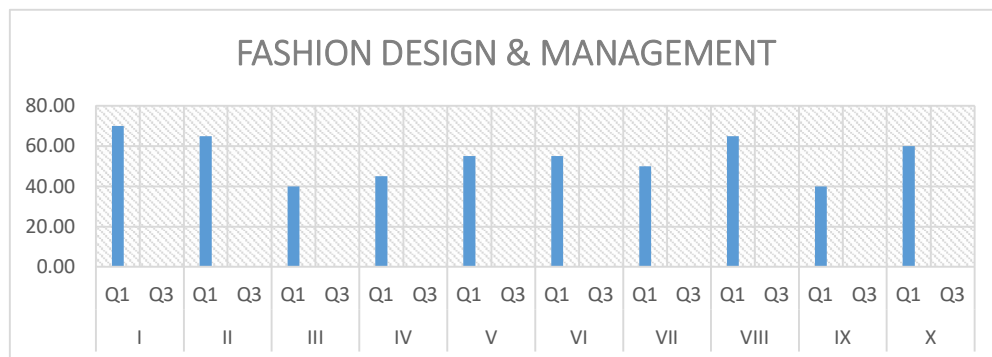
5 Fashion Design & Management

Quarter →

Q1
4

Q3
0

Total Feedbacks =





RANCHI UNIVERSITY, RANCHI

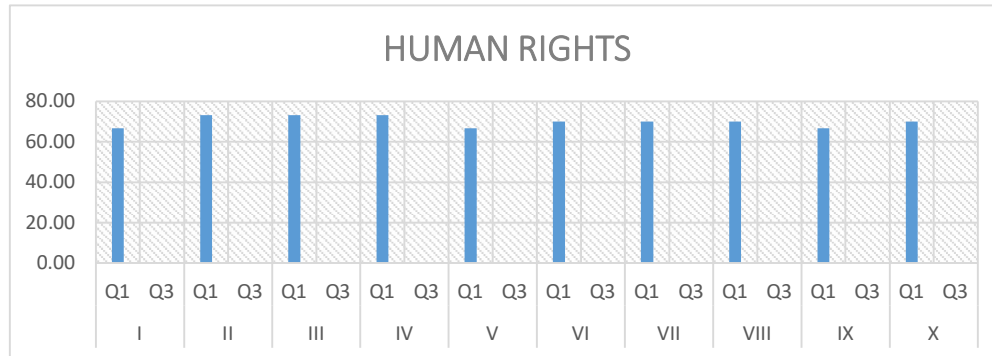
I.Q.A.C.

A Work by IT Cell of IQAC RU, P.G. Chemistry Campus, mail: itcell@ranchiuniversity.ac.in

6 Human Rights

Quarter →	Q1
Total Feedbacks =	6

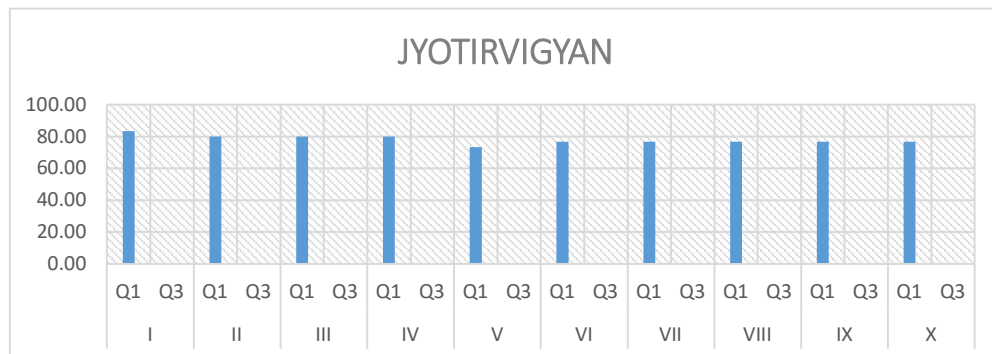
Q3
0



7 Jyotirvigyan

Quarter →	Q1
Total Feedbacks =	6

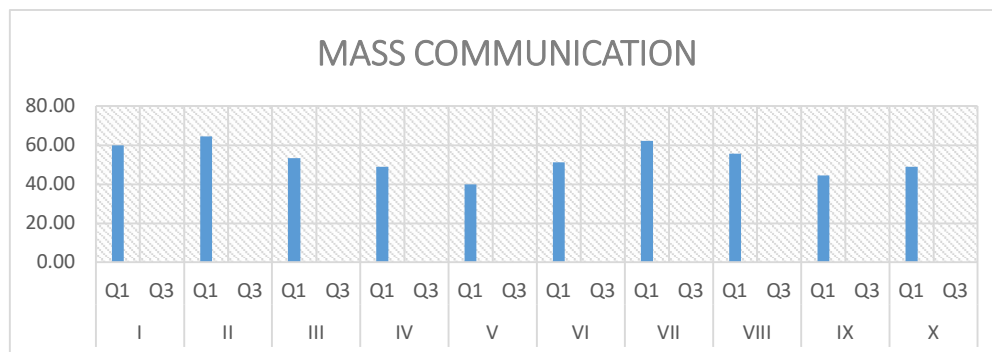
Q3
0



8 Mass Communication

Quarter →	Q1
Total Feedbacks =	9

Q3
0





RANCHI UNIVERSITY, RANCHI

I.Q.A.C.

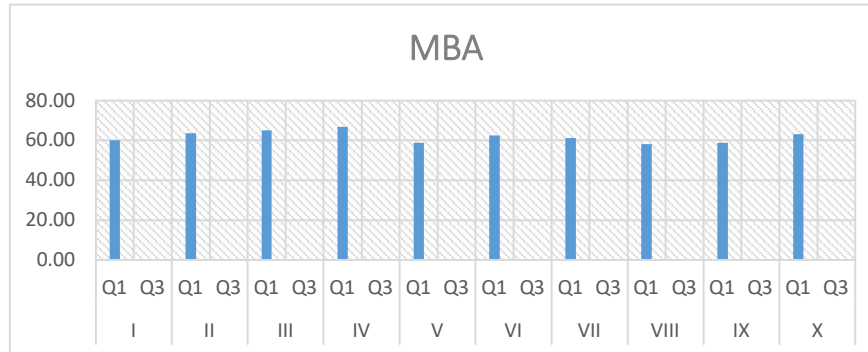
A Work by IT Cell of IQAC RU, P.G. Chemistry Campus, mail: itcell@ranchiuniversity.ac.in

9 MBA

Quarter →
Total Feedbacks =

Q1
32

Q3
0

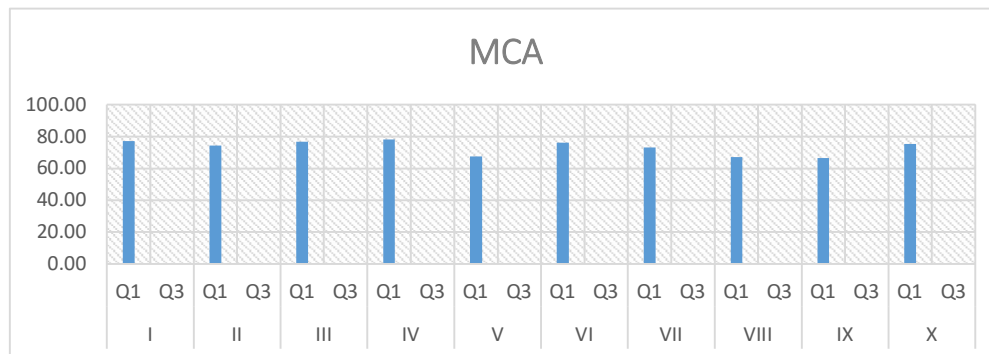


10 MCA

Quarter →
Total Feedbacks =

Q1
43

Q3
0

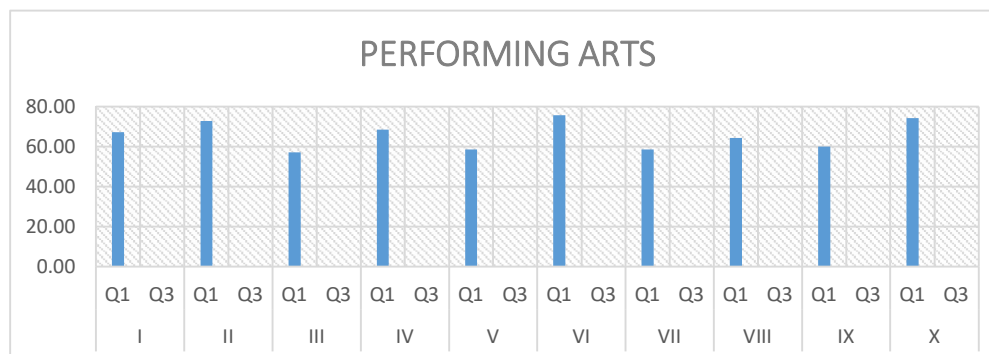


11 Performing Arts

Quarter →
Total Feedbacks =

Q1
14

Q3
0





RANCHI UNIVERSITY, RANCHI

I.Q.A.C.

A Work by IT Cell of IQAC RU, P.G. Chemistry Campus, mail: itcell@ranchiuniversity.ac.in

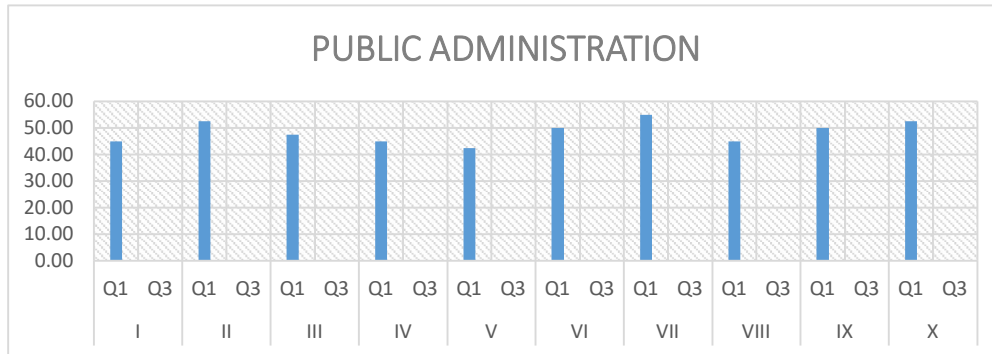
12 Public Administration

Quarter →

Q1
8

Q3
0

Total Feedbacks =



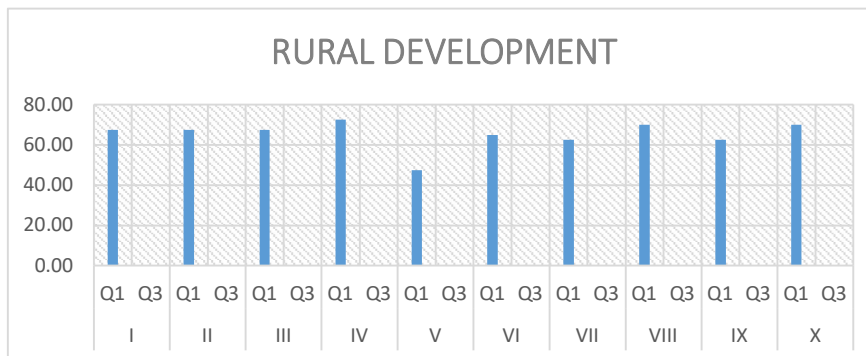
13 Rural Development

Quarter →

Q1
8

Q3
0

Total Feedbacks =



14 Yoga

Quarter →

Q1
21

Q3
0

Total Feedbacks =





RANCHI UNIVERSITY, RANCHI

I.Q.A.C.

A Work by IT Cell of IQAC RU, P.G. Chemistry Campus, mail: itcell@ranchiuniversity.ac.in

VOCATIONAL CERTIFICATE/DIPLOMA COURSES

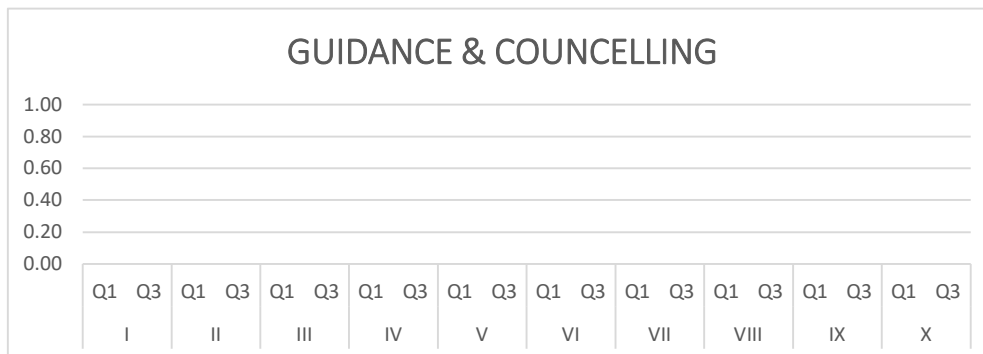
1 PG Diploma in Guidance & Councelling

Quarter →

Q1
0

Q3
0

Total Feedbacks =



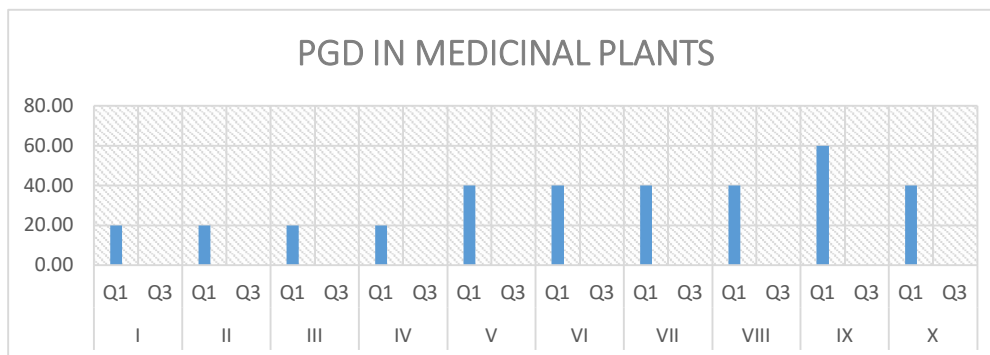
2 PG Diploma in Medicinal Plants

Quarter →

Q1
1

Q3
0

Total Feedbacks =



ANALYSIS:

There are ten questions to be answered by the students. These are based on teaching learning and academic environment, relevance of courses, resources of Departments, course material provided, use of ICT, evaluation process, library resources, field projects or internships, career counselling and guidance or competitive examinations etc. Every question in feedback from students were assessed in range of numeral values 1-5 reflecting Average to Excellent labels; [1= Average, 2= Good, 3= Very Good, 4= Excellent, 5=Outstanding].

Students have given good rating to the teaching, learning and academic environment and the relevance of the course in the overall structure of programme. They are all satisfied with the resources provided to them by the Department and are receiving sufficient material and guidance during the course. They are having sufficient facilities to undertake field projects and internships. Evaluation process is also marked very good and the have ample opportunities for the career counselling and guidance for competitive examinations in the University. Many of the students have observed that the library resources in the respective Departments and tools for online teaching using ICT facilities need to be strengthen.



RANCHI UNIVERSITY, RANCHI

I.Q.A.C.

A Work by IT Cell of IQAC RU, P.G. Chemistry Campus, mail: itcell@ranchiuniversity.ac.in

RECOMMENDATIONS:

It has been observed that University Curriculum is satisfactory in its overall reflection. There are few aspects needed to explore and facilities are to be supported by ICT tools and training to teachers in order to enhance the application of online interactions, classroom interactions using digital screens more effectively to uplift the overall teaching learning ambience. Need of improving library resources of the Departments is also explored. Career Counselling cell is needed to plan its yearly activities to increase its access among students.

Suggestions based on the above observations that may be implemented at the earliest-

- 1.Regular workshop on ICT usages for teachers.
- 2.Library resources to be enhanced by providing latest books and other facilities like access to online library and digital platforms.
- 3.Career counselling may extend its activities covering all Departments of the University.
- 4.Functional language lab may be allowed for access by the students of all Departments.

Dr. Sudesh Kumar Sahu
Director IQAC

DIRECTOR
IQAC, RANCHI UNIVERSITY
RANCHI-834 001